



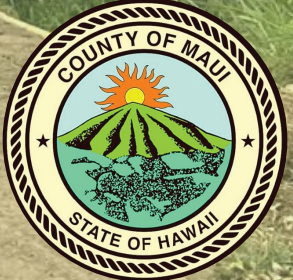
County of Maui Department of Public Works

# Imi Kala *Street Extension*

Draft Environmental Assessment  
Community Open House



March 5, 2025

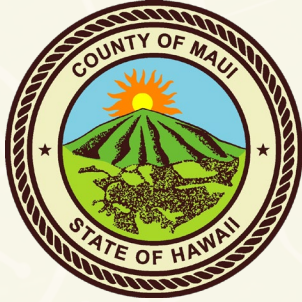




**Welcome**



## Project Team



- ▶ **Jordan Molina**  
Director
- ▶ **Nolly Yagin**  
Project Manager



- ▶ **Robyn Ito**  
Senior Civil Engineer + Project Manager
- ▶ **Maile LaFave**  
Civil Engineer
- ▶ **Jenniffer Scheffel**  
Senior Planner
- ▶ **Ollie Lau**  
Planner



## Meeting Objectives

- ▶ Introduce and discuss the Imi Kala Street Extension project status, timeline, and upcoming tasks.
- ▶ Familiarize on the Environmental Assessment process and how to get involved.
- ▶ Collect feedback and discuss next steps



## Agenda

1

Project Overview and History

2

Environmental Assessment Process

3

Discussion

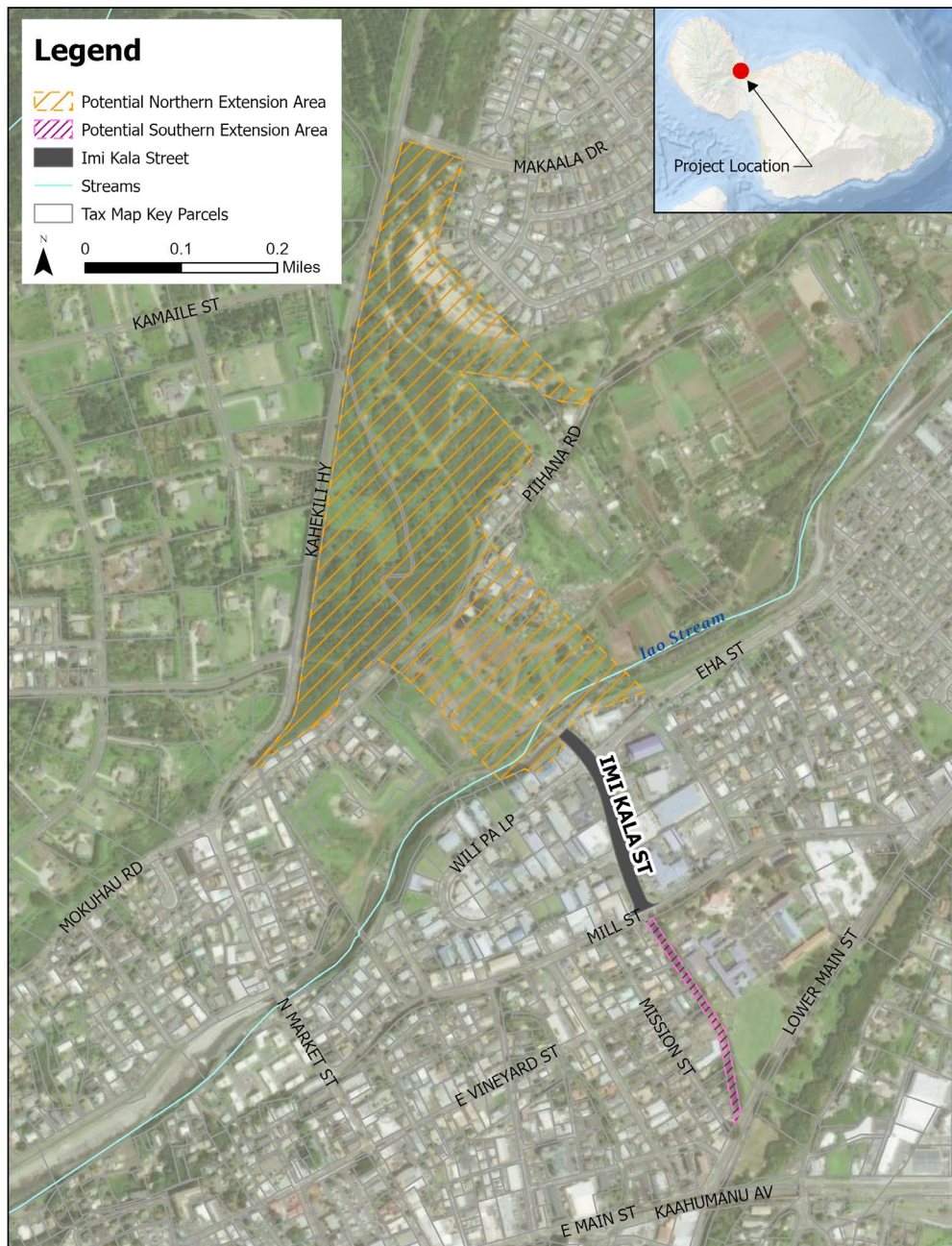
4

Next Steps



# 1 Project Overview & Schedule

Nolly Yagin



## Project Background

- Extension of Imi Kala Street to both north and south
- Addition of 3,500 linear feet of roadway plus utility connections and intersection improvements.
- Provide another connection between Wailuku and Waiehu.
- Connect Kahekili Highway with Lower Main Street.
- Expand multimodal transportation options in Central Maui.
- Project identified in multiple State and County Planning Documents
  - Statewide Transportation Improvement Program (2023)
  - Hele Mai Maui Long Range Transportation Plan 2040 (2019)
  - Bike Plan Hawai'i (2003)



## What we have heard so far...

### INTERVIEWEES

- Senator Hashimoto
- Representative Miyake
- Chair Lee
- St. Anthony School

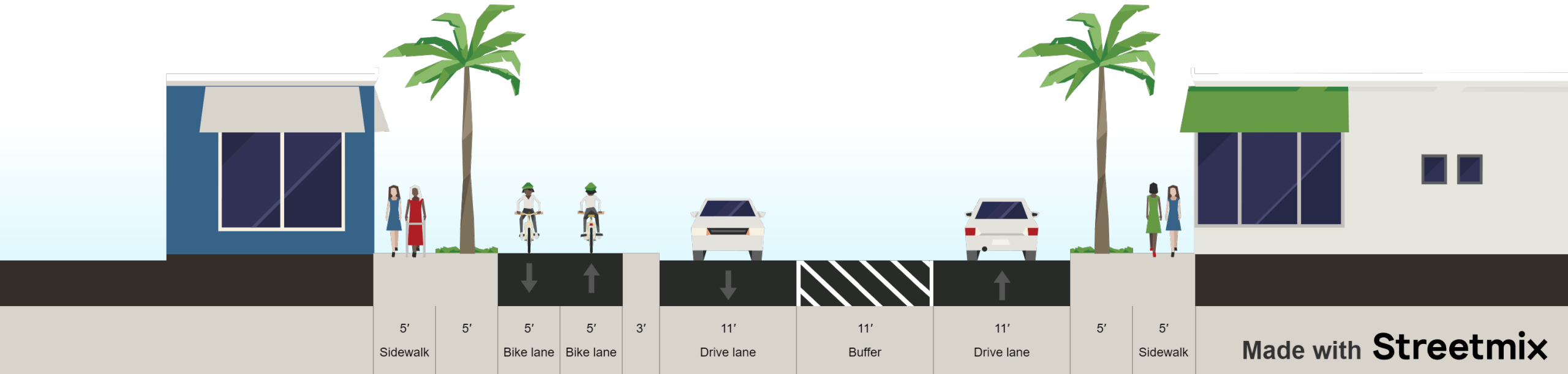
### WHAT WE HEARD...

- Support for this project.
- Need to provide a second route to Wailuku away from Happy Valley.
- Northern Extension is most needed but construction of whole project would be ideal.
- Support for roundabouts and pedestrian facilities, particularly close to St. Anthony School.





## Northern Extension

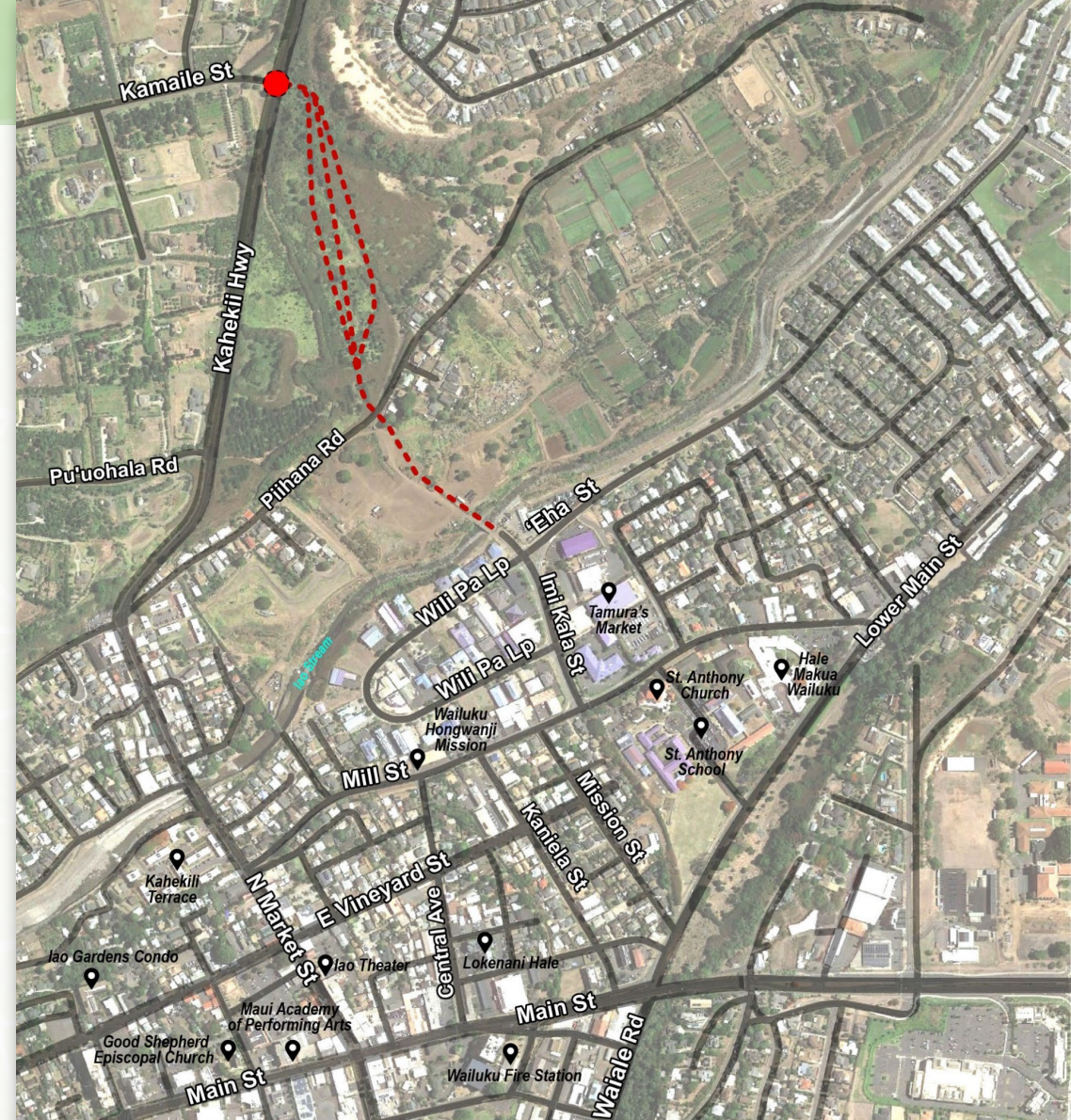


- ▶ Three alternative routes
- ▶ Proposed 60-ft right-of-way
- ▶ Pedestrian and bicycle facilities
- ▶ Utilities including power, water, and sewer
- ▶ Connections at Kahekili Highway and Mill Street proposed as roundabouts



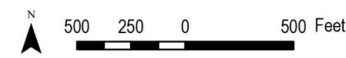
## Northern Extension Alternative 1

- ▶ Three alternative routes
- ▶ Proposed 60-ft right-of-way (4 travel lanes)
- ▶ Pedestrian and bicycle facilities
- ▶ Utilities including power, water, and sewer
- ▶ Connection at Kahekili Highway and Kamaile St. proposed as a roundabout



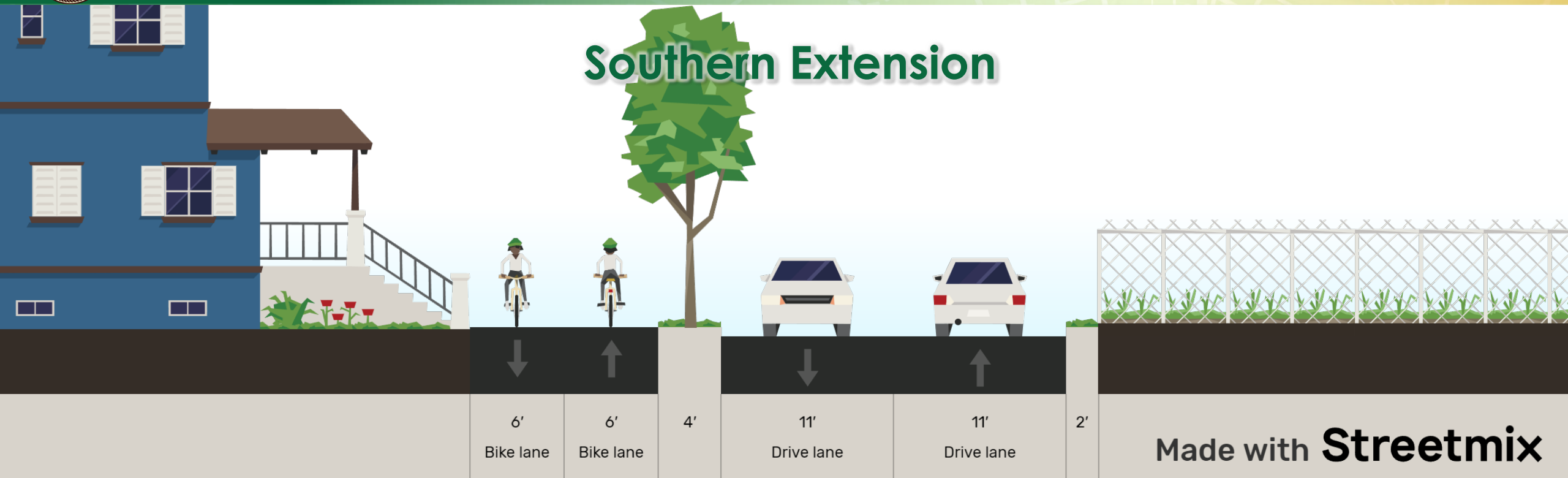
### Legend

- Proposed Roundabout
- Point of Interest
- Alternative 1 Northern Alignment Options





## Southern Extension

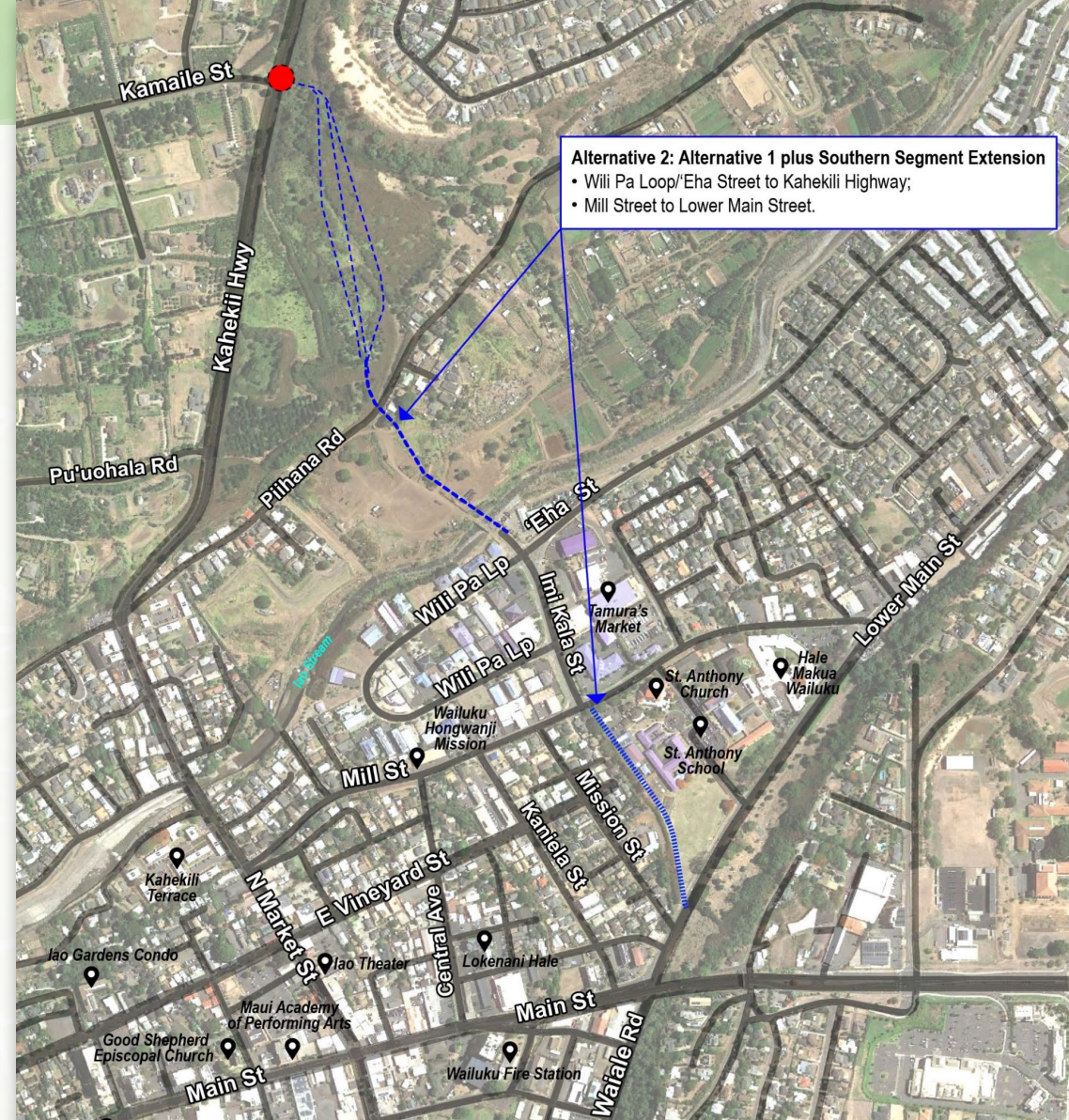


- ▶ Proposed to follow existing former railway corridor parallel to Mission Street
- ▶ 3 Alternative Combinations
- ▶ Proposed 40-ft right-of-way (2 travel lanes)
- ▶ Pedestrian and bicycle facilities
- ▶ Utilities including power, water, and sewer
- ▶ Connections at Mill Street and Lower Main Street proposed as roundabouts



## Southern Extension Alternative 2

- ▶ Connect Mill Street to Lower Main Street.
- ▶ Utilize the existing right of way.



**Alternative 2: Alternative 1 plus Southern Segment Extension**

- Wili Pa Loop/Eha Street to Kahekili Highway;
- Mill Street to Lower Main Street.

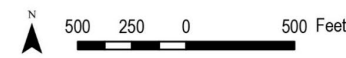


**Legend**

- Proposed Roundabout
- Point of Interest

**Street Extension Alternatives**

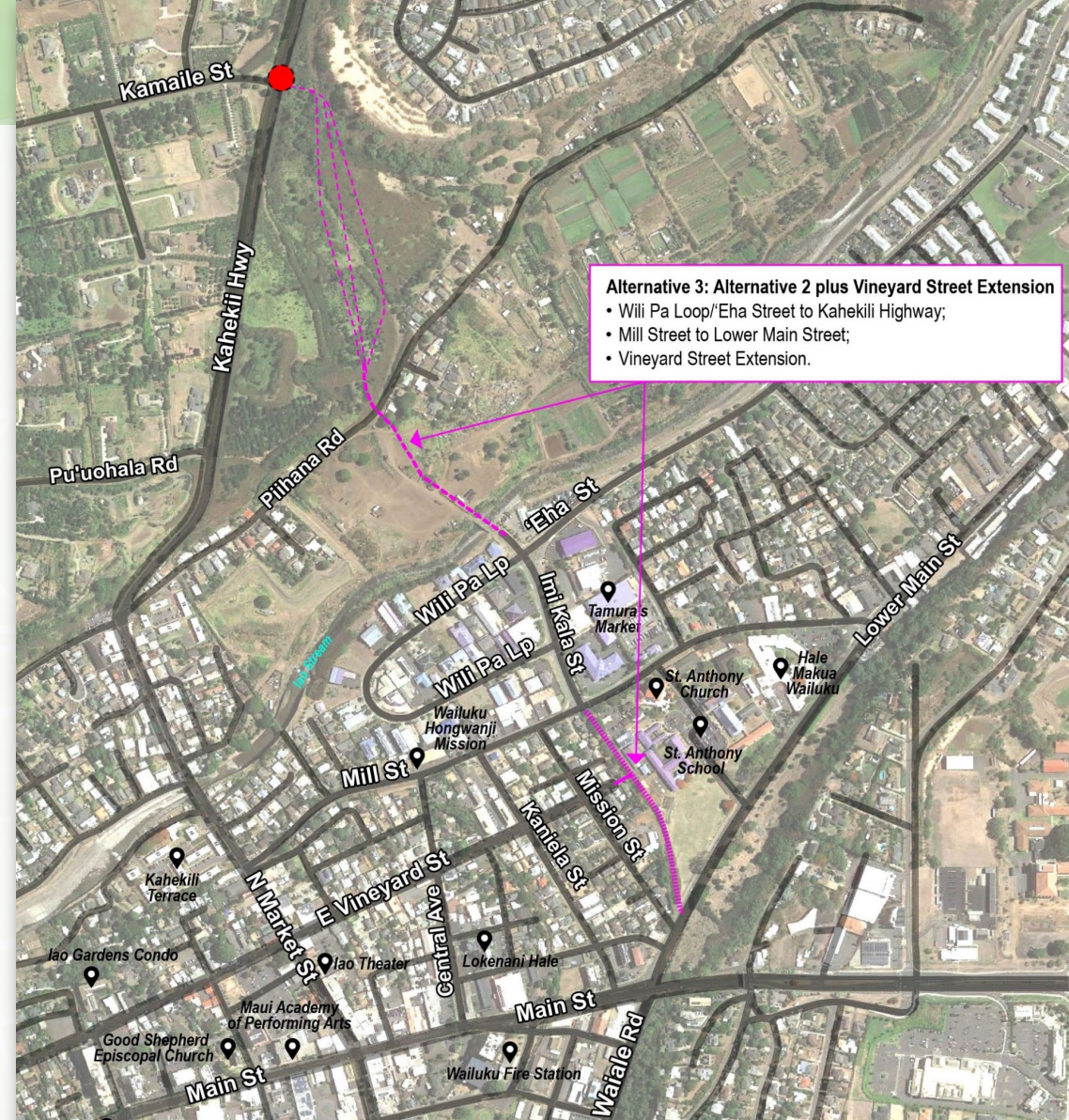
- Alternative 2





## Southern Extension Alternative 3

- ▶ Connect Mill Street to Lower Main Street.
- ▶ Utilize the existing right of way.
- ▶ Connect E Vineyard St. to proposed Imi Kala Extension.



**Alternative 3: Alternative 2 plus Vineyard Street Extension**

- Wili Pa Loop/Eha Street to Kahekili Highway;
- Mill Street to Lower Main Street;
- Vineyard Street Extension.

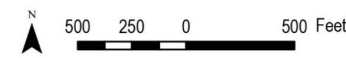


**Legend**

- Proposed Roundabout
- 📍 Point of Interest

**Street Extension Alternatives**

- Alternative 3





## Southern Extension Alternative 4

- ▶ Connect Mill Street to Lower Main Street.
- ▶ Utilize the existing right of way.
- ▶ Connect E Vineyard St. to proposed Imi Kala Extension.
- ▶ Close intersection at Mission Street and Lower Main Street.



**Alternative 4: Alternative 2 plus Lower Main Street & Mission Street Intersection Closure**

- Wili Pa Loop/Eha Street to Kahekili Highway;
- Mill Street to Lower Main Street;
- Vineyard Street Extension;
- Mission Street and Lower Main Street intersection closure.

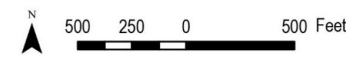


**Legend**

- Proposed Roundabout
- 📍 Point of Interest

**Street Extension Alternatives**

- Alternative 4





**KEEP OUT**  
NO TRESPASSING  
VIOLATORS WILL BE  
PROSECUTED  
NO DUMPING

# 2 Draft Environmental Assessment

Jennifer Scheffel



# Understanding the Environmental Review Process

## The Environmental Review Program (ERP)

- ▶ Responsible for guiding projects through Hawai'i's official environmental review, Chapter 343 of the Hawai'i Revised Statutes, also known as the Hawai'i Environmental Policy Act (HEPA) process.
- ▶ Process described in Environmental Impact Statement Rules - HAR 11-200.1

## The Environmental Notice

- ▶ Semi-monthly publication announces the availability of Environmental Assessments (EAs) and Environmental Impact Statements (EISs) for public review and comment





# Imi Kala Street Extension Environmental Assessment

## 1.0 – Project Description

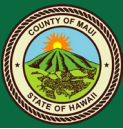
- ▶ Introduction, background, purpose and need

## 2.0 – Alternatives

- ▶ Describes the Proposed Action and the no-action alternative

## 3.0 – Affected Environment, Potential Impacts, and Minimization Measures

- ▶ Cultural Practices and Beliefs
- ▶ Archaeological and Historic
- ▶ Biological Resources
- ▶ Geology and Soils
- ▶ Water Resources
- ▶ Air Quality
- ▶ Climate and Climate Change
- ▶ Noise
- ▶ Roadways and Traffic
- ▶ Socioeconomic
- ▶ Public Facilities/Services
- ▶ Natural Hazards
- ▶ Secondary and Cumulative Impacts



# Imi Kala Street Extension Environmental Assessment (Continued)

## 4.0 – Relationship to Land Use Plans and Policies

- ▶ State and County Plans

## 5.0 – Findings and Conclusions

## 6.0 – Agency Consultation

## 7.0 – References



# Imi Kala Street Extension Environmental Assessment

- Noise
- Traffic
- Cultural
- Archaeological and Historic Resources
- Biological Resources (Flora and Fauna)



## Mahalo!

For more information visit:



<https://ssfm.konveio.com/imi-kala-extension>

- ▶ Visit the **project website** to learn more!
- ▶ Sign up for the project **mailing list** to be notified about the publication of the Draft Environmental Assessment
  - ▶ Publication date **TBD**
- ▶ The Draft Environmental Assessment will include a 30-day public **comment period** to inform the Final Environmental Assessment
  - ▶ Public comment period would close 30 days after the draft Environmental Assessment publication