

HOALOHA PARK TRANSPORTATION SUMMARY

A transportation study was completed to assess existing conditions around multimodal access to and within the site. This study included an assessment of uses during normal times as well as during more intensive times such as during canoe regattas.

EXISTING CONDITIONS (NORMAL USE)

VEHICLE ACCESS

Hoaloaha Park Driveway provides the only public access to the site through the unsignalized intersection with Ka'ahumanu Avenue and thus all traffic must turn in and out of the driveway to access the park and existing parking lot.

BUS TRANSIT ACCESS

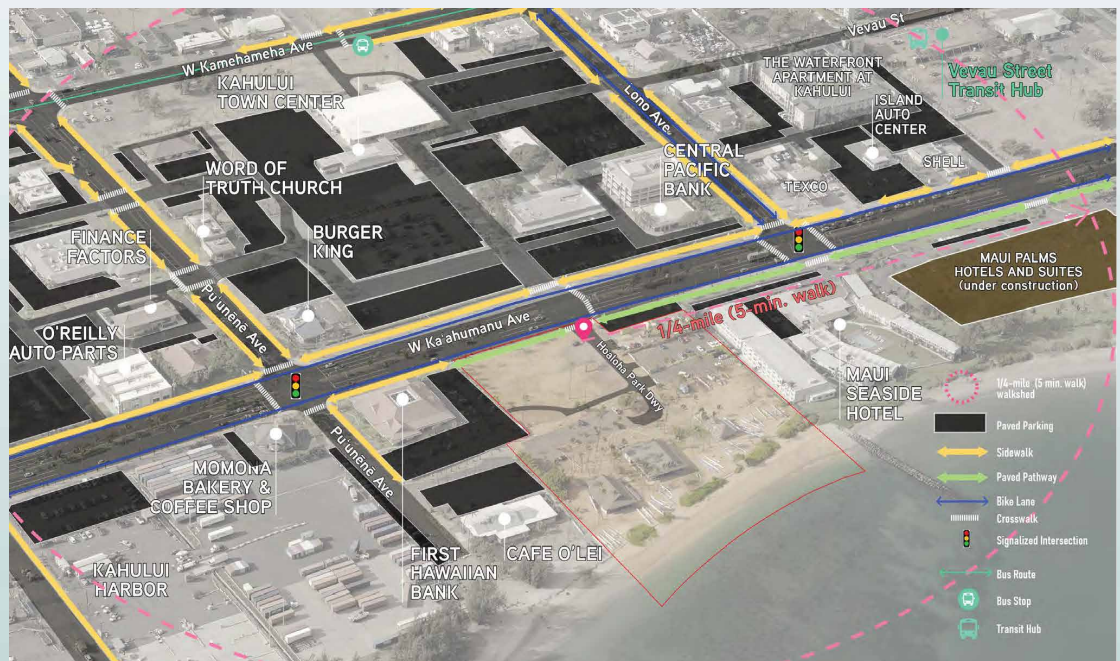
- > There are no bus stops located along Ka'ahumanu Avenue and thus no direct bus access to the site.
- > There are a couple of bus routes that circulate through the area with bus stops located 0.2 - 0.5 miles (4 - 10 minute walk) from the site.
- > The majority of bus routes are routed from the Queen Ka'ahumanu Transit Center located one mile from the site. However, this is planned to relocate to a site on Vevau Street, 0.3 miles (8 minute walk) from the site, by the end of 2024.

PEDESTRIAN ACCESS

- > Pedestrian access to the site is provided via sidewalks and sidepaths along Ka'ahumanu Avenue.
- > An uncontrolled, marked crosswalk exists across the seven lanes of Ka'ahumanu Avenue, located on the west side of the driveway, with a median refuge island located between opposing lanes of traffic.
- > No dedicated pedestrian pathways exist along the driveway for accessing the beach and ocean.
- > Pedestrians may also access the park from along the half-mile stretch of shoreline between Pu'unēnē Avenue and Kahului Beach Road.
- > Public beach access is provided through the park and to the beach via dedicated beach access points in the dune system, vegetated with naupaka.

BICYCLE ACCESS

- > Bike lanes are marked along the outside travel lanes of Ka'ahumanu Avenue in both directions, however many cyclists can be observed riding along the sidewalk and sidepath.
- > A short asphalt sidepath exists along the park frontage of Ka'ahumanu Avenue, however it transitions into sidewalks on either side.



HOALOHA PARK TRANSPORTATION SUMMARY

EXISTING CONDITIONS (NORMAL USE)

PARKING

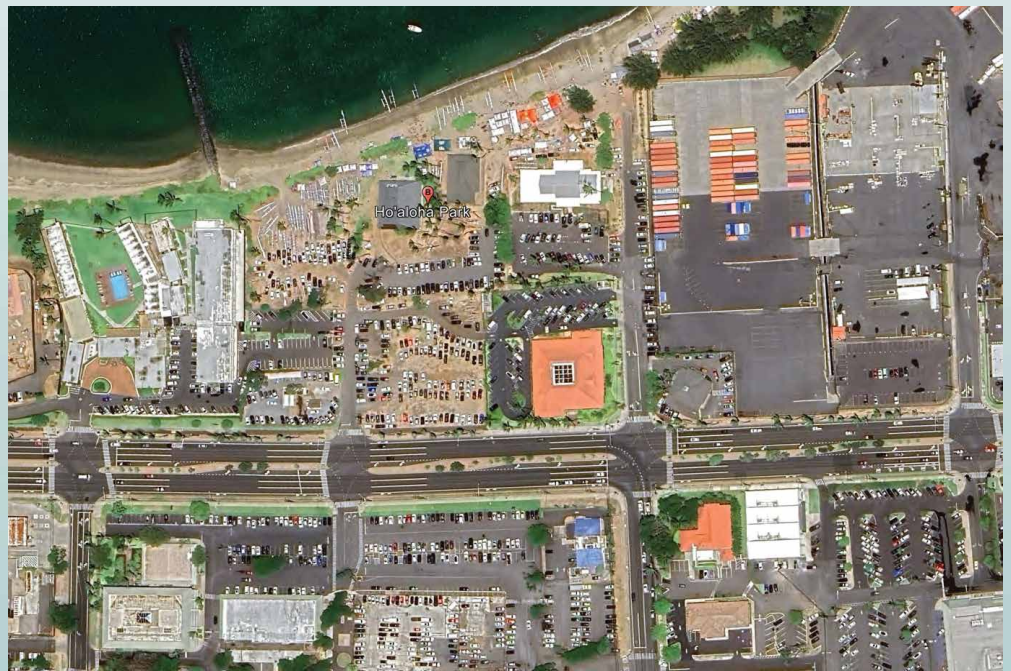
- › There are 50 paved parking stalls within the existing parking lot, one of which is a designated handicap stall.
- › During normal times, the paved parking lot is used by ocean and park users and is rarely at capacity.
- › The existing open field located south of the park is utilized for overflow parking, especially during more intense use times, such as during canoe club paddling practices and regattas.
- › On-street parking is available along the makai leg of Pu'unēnē Avenue, alongside Kahului Harbor.
- › Additional parking is available across Ka'ahumanu Avenue at Kahului Town Center as well as at Maui Mall, which are both used during more intense use times such as regattas.
- › No bicycle racks exist within the park.

REGATTA CONDITIONS (INTENSIVE USE)

Hoaloha Park is one of the two primary sites for canoe regattas held on Maui, with four regattas held there during the 2023 racing season. Regatta season is between April and July. A regatta event on June 24, 2023, was observed for the purposes of documenting conditions during intensive use times. It was observed that during regatta events, the park gets congested and vehicles can have difficulty maneuvering through the site.

VEHICLE & TRANSIT ACCESS

- › Vehicle access via Hoaloha Park Driveway was observed to be congested throughout the event.
- › This led to congestion along Ka'ahumanu Avenue, particularly in the westbound direction.
- › A handful of smaller shuttles were observed dropping off participants at the Hoaloha Park Driveway.



PEDESTRIAN ACCESS

- › Pedestrians were observed using both the signalized crossing at Pu'unēnē Avenue and the unsignalized crossing at Hoaloha Park Driveway.

BICYCLING ACCESS

- › There were not many bicyclists observed accessing the site during the regatta. Those that were observed were riding on the sidewalk, not in the marked bike lane on Ka'ahumanu Avenue.

PARKING

- › During the regatta, parking at the park was observed to be at maximum capacity overloaded in both the asphalt lot and the mauka lot, as well as in the grassy area on the west side of the park.
- › Parking along Pu'unēnē Avenue was coned off and restricted for use only by race officials and Department of Transportation personnel.
- › Many participants parked in overflow parking at Kahului Town Center and Maui Mall on the mauka side of Ka'ahumanu Avenue.



HOALOHA PARK TRANSPORTATION SUMMARY

HAZARDS & VULNERABILITY

VULNERABILITY CONSIDERATIONS

- › Sea level rise and coastal erosion could impact available space in the park for access and parking.

ADAPTATION CONSIDERATIONS

- › Maintain the mauka lot as grass in order to maximize permeable spaces in the park.
- › Pursue a formal shared parking agreement with Maui Mall and Kahului Town Center to formalize overflow parking on regatta days.
- › Add Rectangular Rapid Flashing Beacons (RRFB)s at the unsignalized crossing across Ka'ahumanu Avenue to increase safety for those accessing the park from mauka of Ka'ahumanu Avenue.
- › Provide dedicated sidewalks or shared use paths for pedestrian and bicycle access into the park.
- › Consider improving circulation and access by providing a secondary access to the park.



Rectangular Rapid Flashing Beacons (RRFB)s

HOW TO GET INVOLVED

Community input will be critical to shape the vision and adaptation plan for Hoaloha Park. There will be a variety of ways to get involved and make your voice heard.



Visit the Project Website

Visit www.mauicounty.gov/2787/Hoaloha-Park-Adaptation-Plan to learn more about the project and sign up for emails.



Attend Community Events

Share your mana'o at an upcoming public event or online open house.



Send Us Your Comments

Submit your comments on the draft plan or email us directly.

For more information, please contact

County of Maui Department of Parks & Recreation

Contact: Erika Hughston
Phone: 808-270-7387
Email: erika.hughston@co.maui.hi.us



SSFM International

Contact: Melissa May
Phone: 808-628-5861
Email: mmay@ssfm.com

