

# HOALOHA PARK INFRASTRUCTURE REPORT

The infrastructure technical memorandum identified existing infrastructure and facilities serving Hoaloha Park. The purpose of the memo was to identify infrastructure and facilities that may be vulnerable to coastal hazards, as well as to inform the development of potential adaptation strategies and capital projects for the site to increase its resilience to coastal hazards. Transportation infrastructure and site access is addressed in the Transportation Existing Conditions memorandum.

## WATER & WASTEWATER

### POTABLE WATER

- > The public water system supplies water for drinking, showers, fire protection, and irrigation.
- > There are two shower blocks, one constructed by Hawaiian Canoe Club and one constructed by Nā Kai 'Ewalu that serve their members and are not available to the public.
- > Both Canoe Hale have internal bathrooms and external spigots that are for member use only.

### WASTEWATER

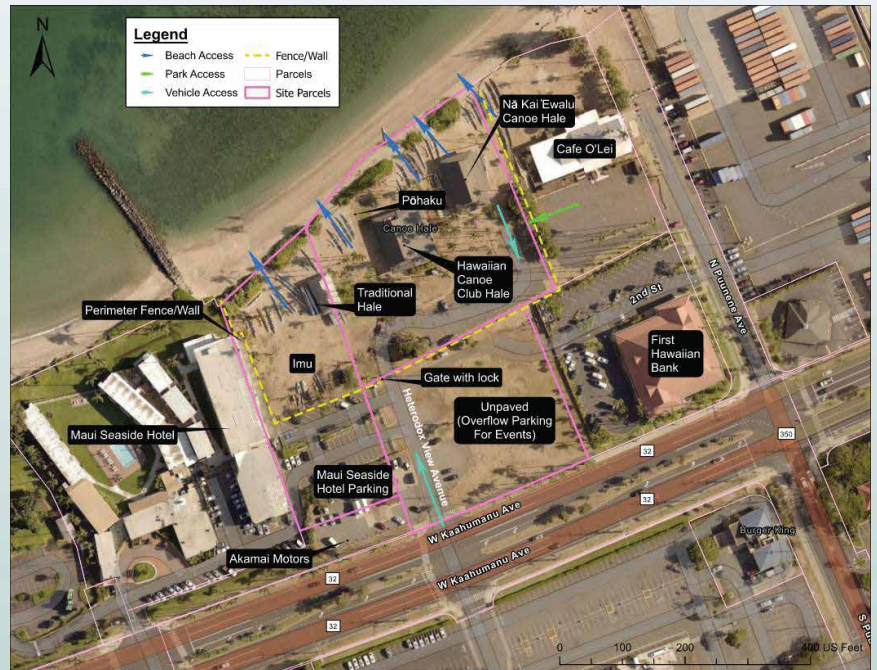
- > A sewer system on-site connects to the Wailuku-Kahului Wastewater Treatment Plant (WWTP), which is slated for capacity upgrades by 2030. Both Hale feed into the sewer system.
- > A County supplied portapotty is often at the site and is the only public restroom available at Hoaloha Park.

### STORMWATER DRAINAGE

- > Stormwater runoff in the area is collected and conveyed by a municipal storm sewer system, but there is no existing on-site storm drain infrastructure at Hoaloha Park.
- > Due to the high permeability of the sandy soils on-site, stormwater infiltrations into the ground and rarely ponds.
- > Flooding on-site is not a recurring issue, however there is a history of flooding adjacent to the site (along Pu'unēnē and Ka'ahumanu Avenue) during heavy rain that can sometimes cut off park access.

### POWER & COMMUNICATIONS

- > Electricity and communications are delivered to the site via overhead cables on wood utility poles and provide service to the two modern canoe hale.



# HOALOHA PARK INFRASTRUCTURE REPORT

## HAZARDS & VULNERABILITY

## KEY FINDINGS

Four main potential hazards were assessed for their impact on the watershed, the site, and park users.

HAZARD	IMPACT ON SITE INFRASTRUCTURE
Sea Level Rise	Flooding of infrastructure near shoreline, including canoe hales, parking lots, and underground utilities.
Flooding	Increased strain on stormwater management systems, restricted accessibility, and disruption to transportation networks and utility services. Risk of damage to roadways, particularly along Hoaloha Park Driveway and internal circulation routes.
Hurricanes	Damage to critical infrastructure including power and communication lines. Structural damage to buildings and facilities from high winds and storm surge, disruption to utilities hindering emergency response
Wildfire	Potential damage to facilities and structures such as canoe hales and storage areas due to fire spread and reduced nearshore water quality.

## ADAPTATION CONSIDERATIONS

Adaptation strategies can provide multiple benefits by addressing flooding and erosion caused by sea-level rise, as well as impacts from hurricanes and wildfires.

### ROADWAY & ACCESS

- › Raise the buildings, entryways, and regrade the site
- › Relocate facilities out of areas subject to constant flooding or erosion
- › Modify and/or consolidate site and beach accessways
- › Consider dune restoration and/or beach nourishment

### WATER & WASTEWATER

- › Raise utility lines above projected flood levels
- › Use corrosion resistant materials
- › Harden/reinforce pipelines and manholes with concrete jacket
- › Implement drainage systems on-site and upgrades off-site

### POWER & COMMUNICATIONS

- › Relocate away from vulnerable areas
- › Harden/reinforce and bury systems

### CANOE HALE, STORAGE & FENCING

- › Elevate and retrofit structures and storage
- › Relocate facilities away from vulnerable areas
- › Use fire-resistant materials

## HOW TO GET INVOLVED

Community input will be critical to shape the vision and adaptation plan for Hoaloha Park. There will be a variety of ways to get involved and make your voice heard.



#### • Visit the Project Website

Visit [www.mauicounty.gov/2787/Hoaloha-Park-Adaptation-Plan](http://www.mauicounty.gov/2787/Hoaloha-Park-Adaptation-Plan) to learn more about the project and sign up for emails.



#### • Attend Community Events

Share your mana'o at an upcoming public event or online open house.



#### • Send Us Your Comments

Submit your comments on the draft plan or email us directly.

*For more information, please contact*

**County of Maui Department of Parks & Recreation**



**Contact:** Erika Hughston

**Phone:** 808-270-7387

**Email:** erika.hughston@co.maui.hi.us

**SSFM International**

**Contact:** Melissa May

**Phone:** 808-628-5861

**Email:** mmay@ssfm.com

